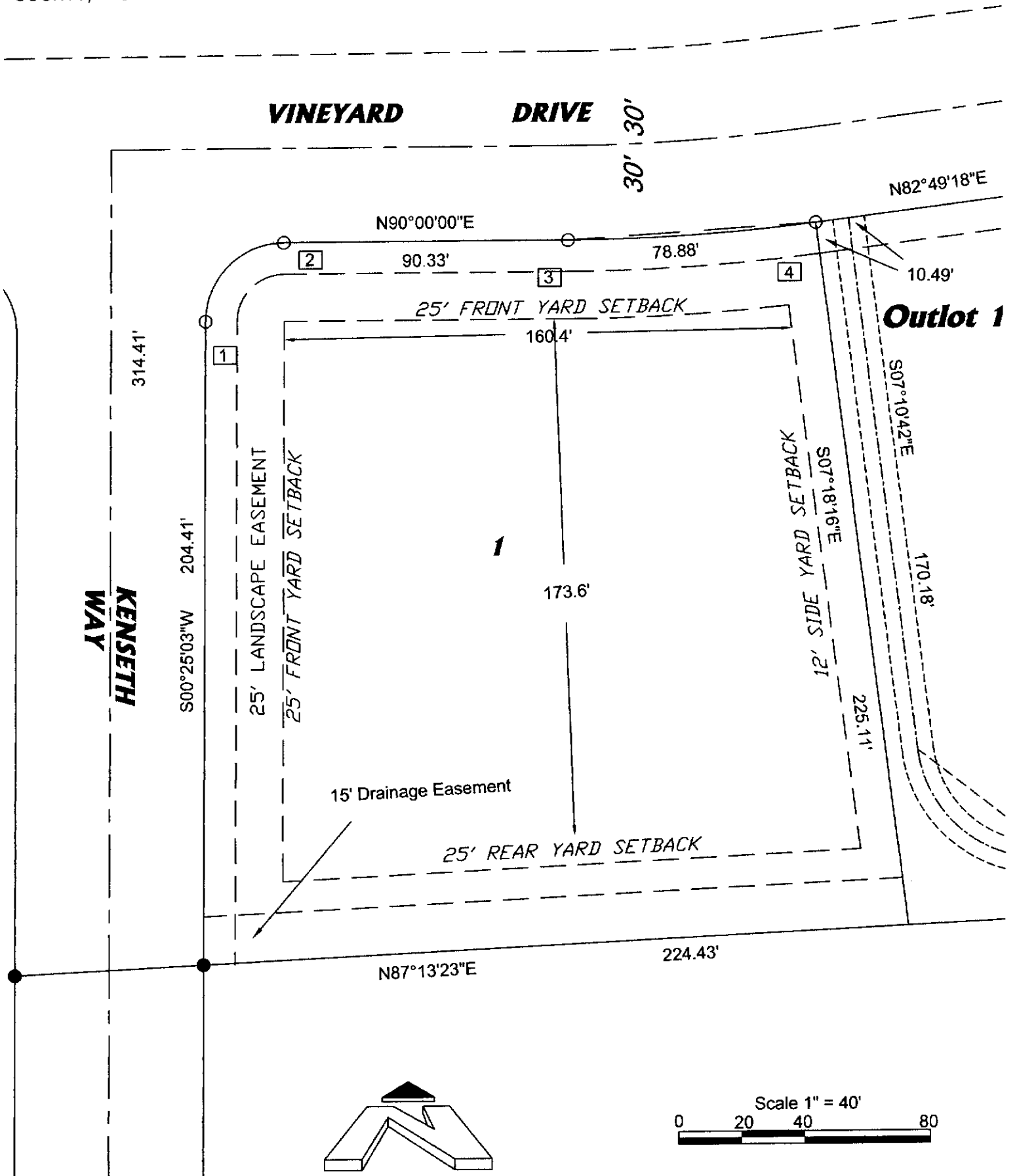


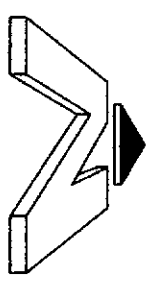
BUILDING ENVELOPE DETAIL

LOT 1, THE VINEYARDS AT CAMBRIDGE, VILLAGE OF CAMBRIDGE, DANE COUNTY, WISCONSIN.

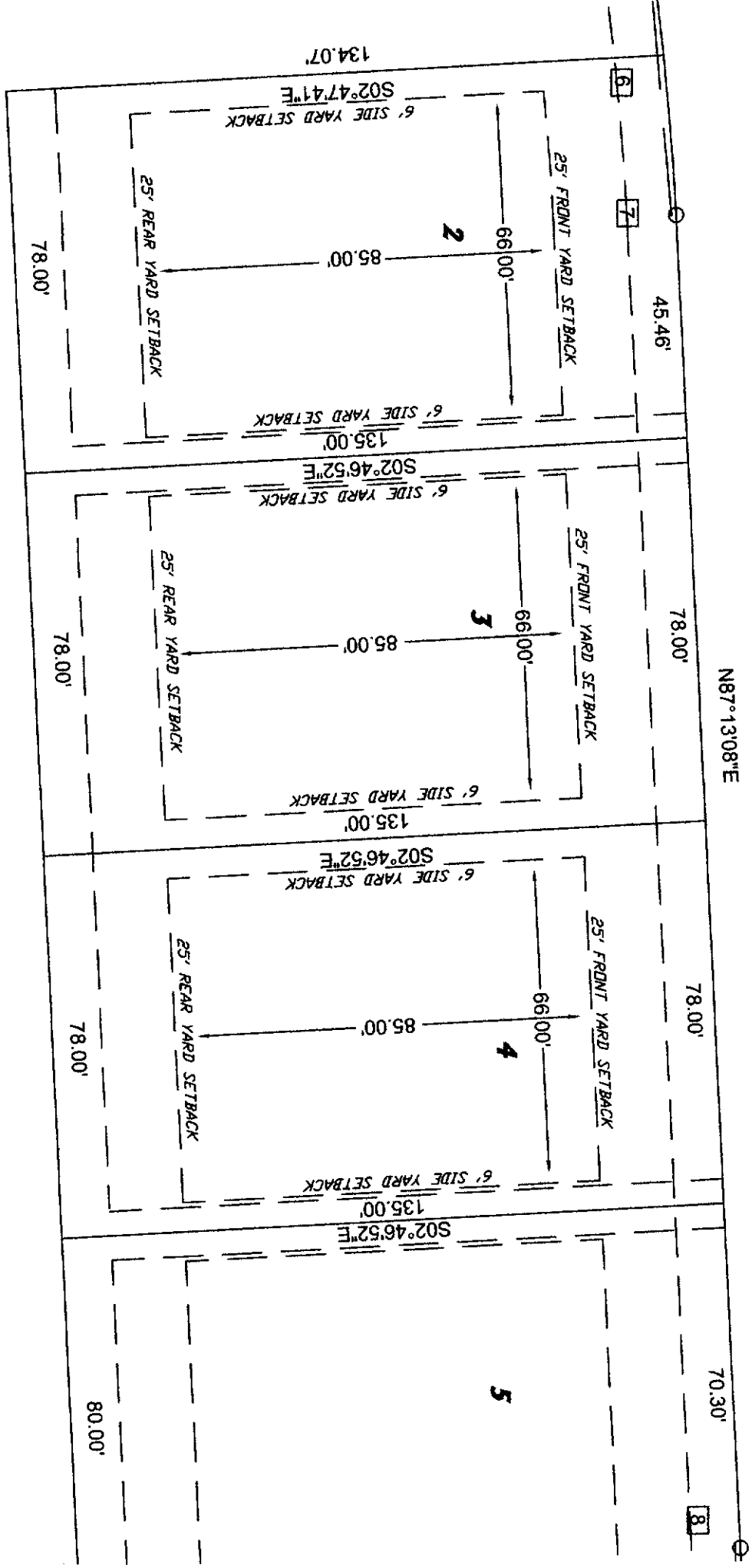


BUILDING ENVELOPE DETAIL

LOTS 2, 3, & 4, THE VINEYARDS AT CAMBRIDGE, VILLAGE OF CAMBRIDGE,
DANE COUNTY, WISCONSIN.



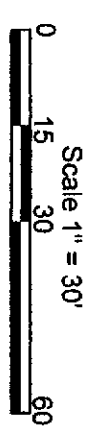
VINEYARD DRIVE



30'
30'

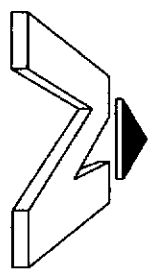
N87°13'08"E

Outlet 1



BUILDING ENVELOPE DETAIL

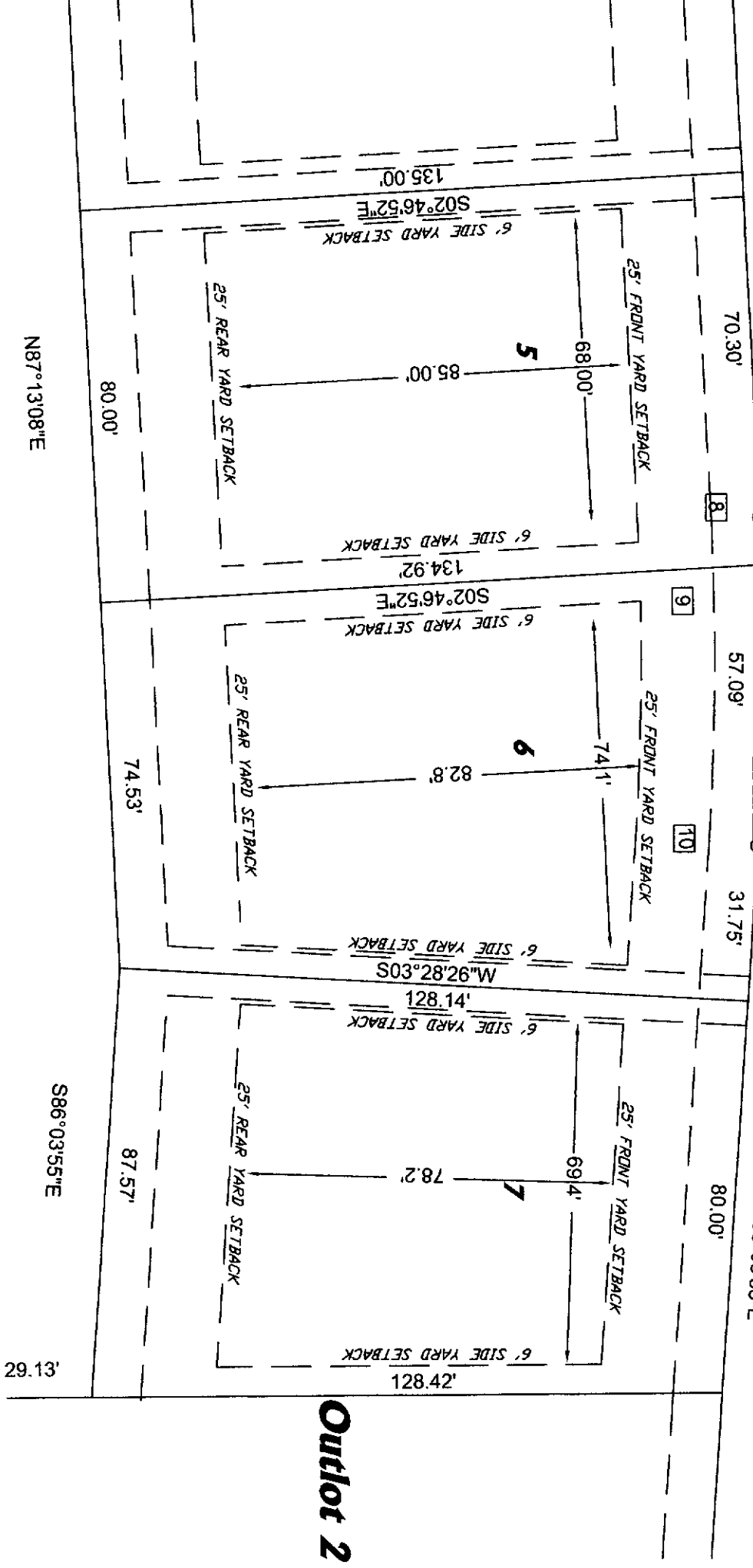
LOTS 5, 6, & 7, THE VINEYARDS AT CAMBRIDGE, VILLAGE OF CAMBRIDGE,
DANE COUNTY, WISCONSIN



30' 30'

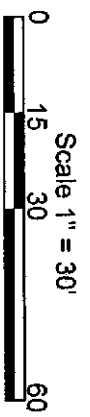
VINEYARD DRIVE

S86°03'55"E



Outlet 1

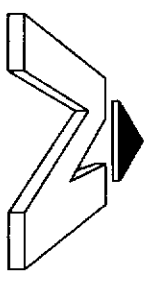
Outlet 2



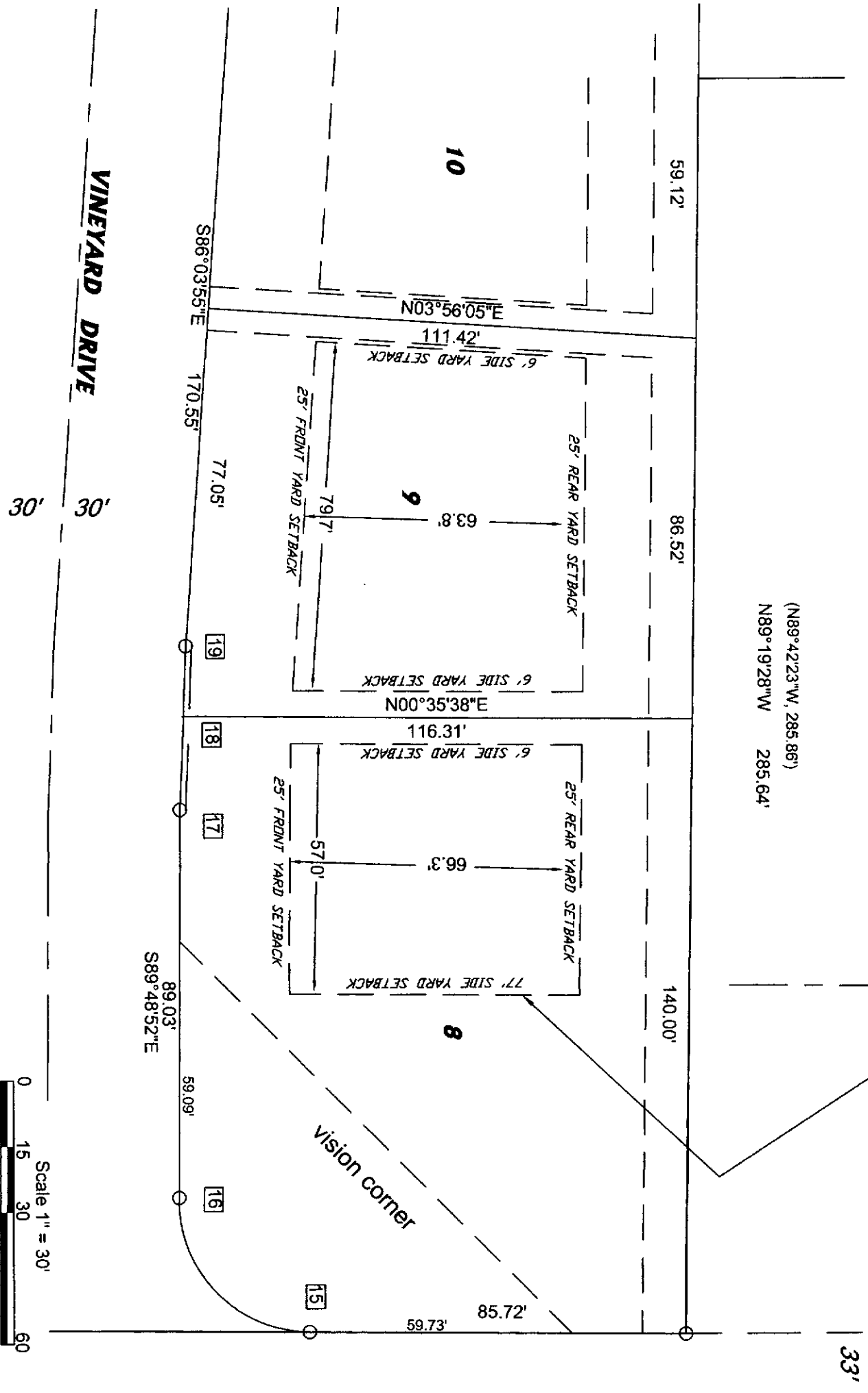
BUILDING ENVELOPE DETAIL

LOTS 8 & 9, THE VINEYARDS AT CAMBRIDGE, VILLAGE OF CAMBRIDGE,
DANE COUNTY, WISCONSIN.

(N89°42'23"W, 285.86')
N89°19'28"W 285.64'

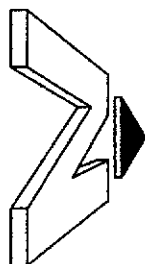


110' DOT setback from
highway centerline

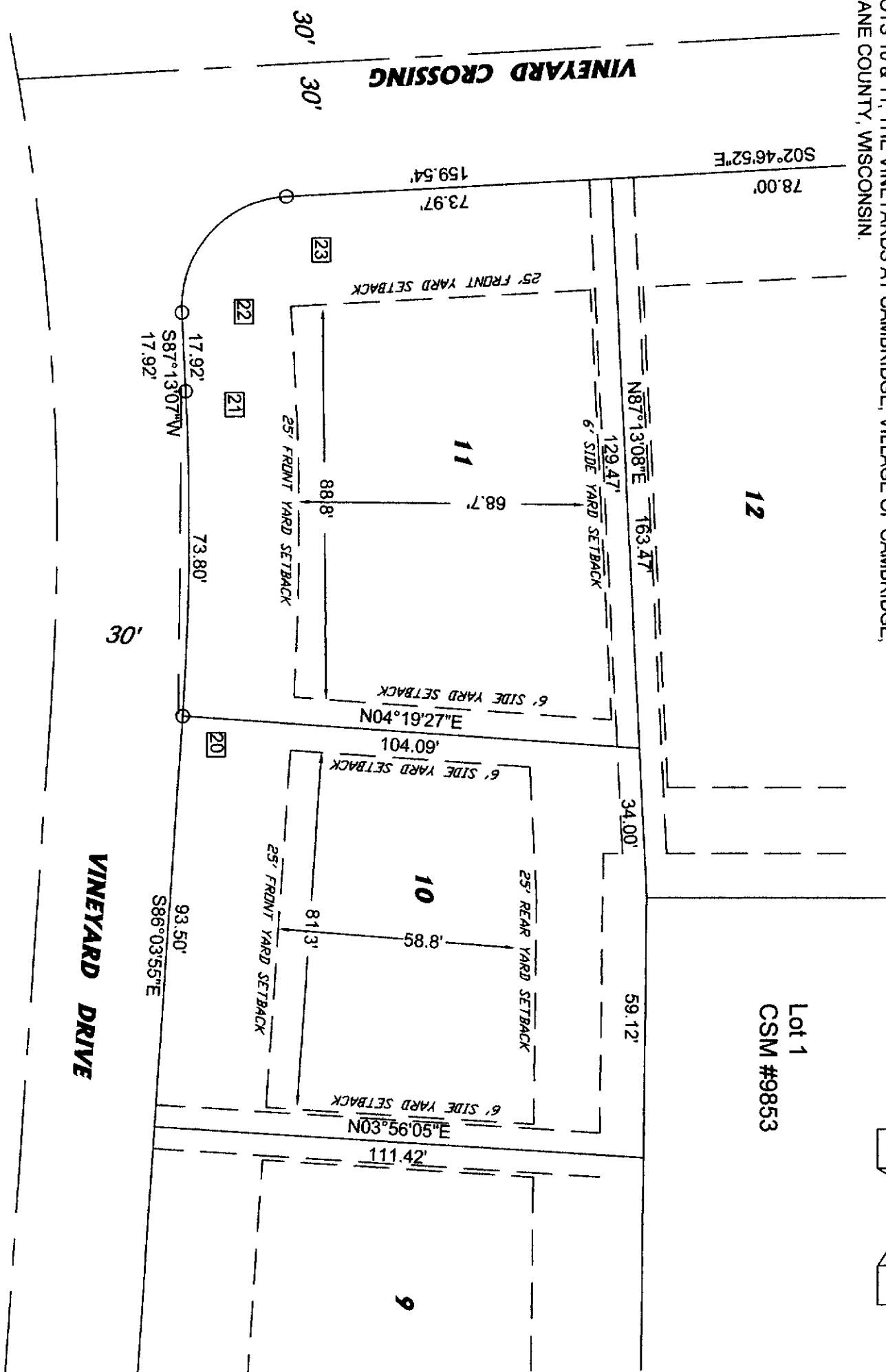


BUILDING ENVELOPE DETAIL

LOTS 10 & 11, THE VINEYARDS AT CAMBRIDGE, VILLAGE OF CAMBRIDGE,
DANE COUNTY, WISCONSIN.



Lot 1
CSM #9853



BUILDING ENVELOPE

DETAIL

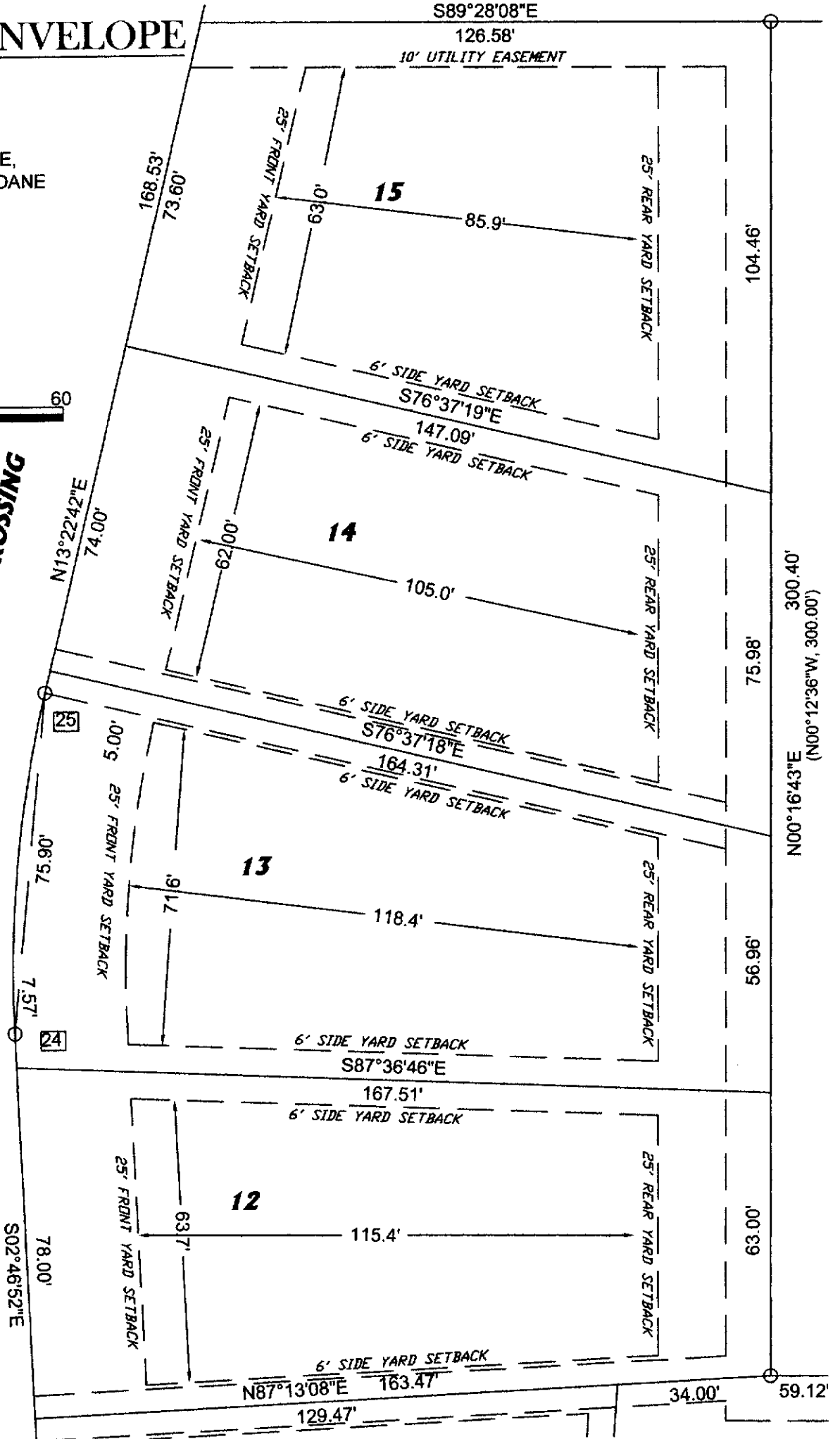
LOTS 12, 13, 14, & 15, THE VINEYARDS AT CAMBRIDGE, VILLAGE OF CAMBRIDGE, DANE COUNTY, WISCONSIN.



Scale 1" = 30'



VINEYARD CROSSING



30' 30'

S02°46'52"E
78.00'

7.57'

75.96'

5.00'

74.00'

N13°22'42"E

168.53'

73.60'

126.58'

S89°28'08"E

129.47'

N87°13'08"E

6' SIDE YARD SETBACK

S87°36'46"E

6' SIDE YARD SETBACK

S76°37'18"E

6' SIDE YARD SETBACK

S76°37'19"E

6' SIDE YARD SETBACK

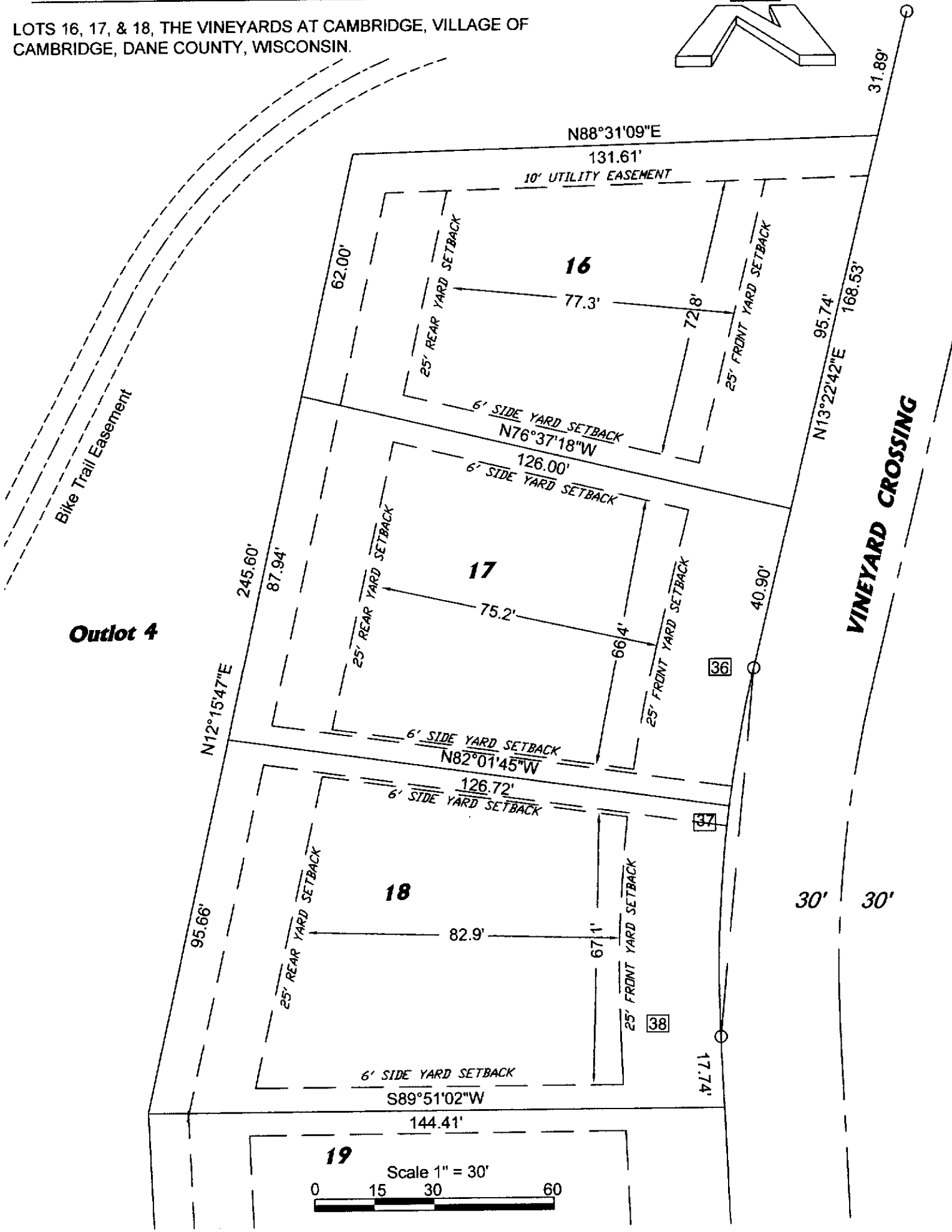
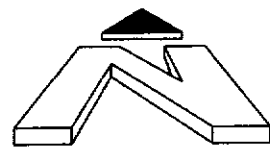
10' UTILITY EASEMENT

S89°28'08"E

126.58'

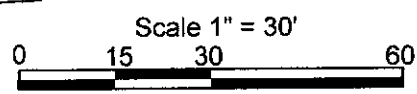
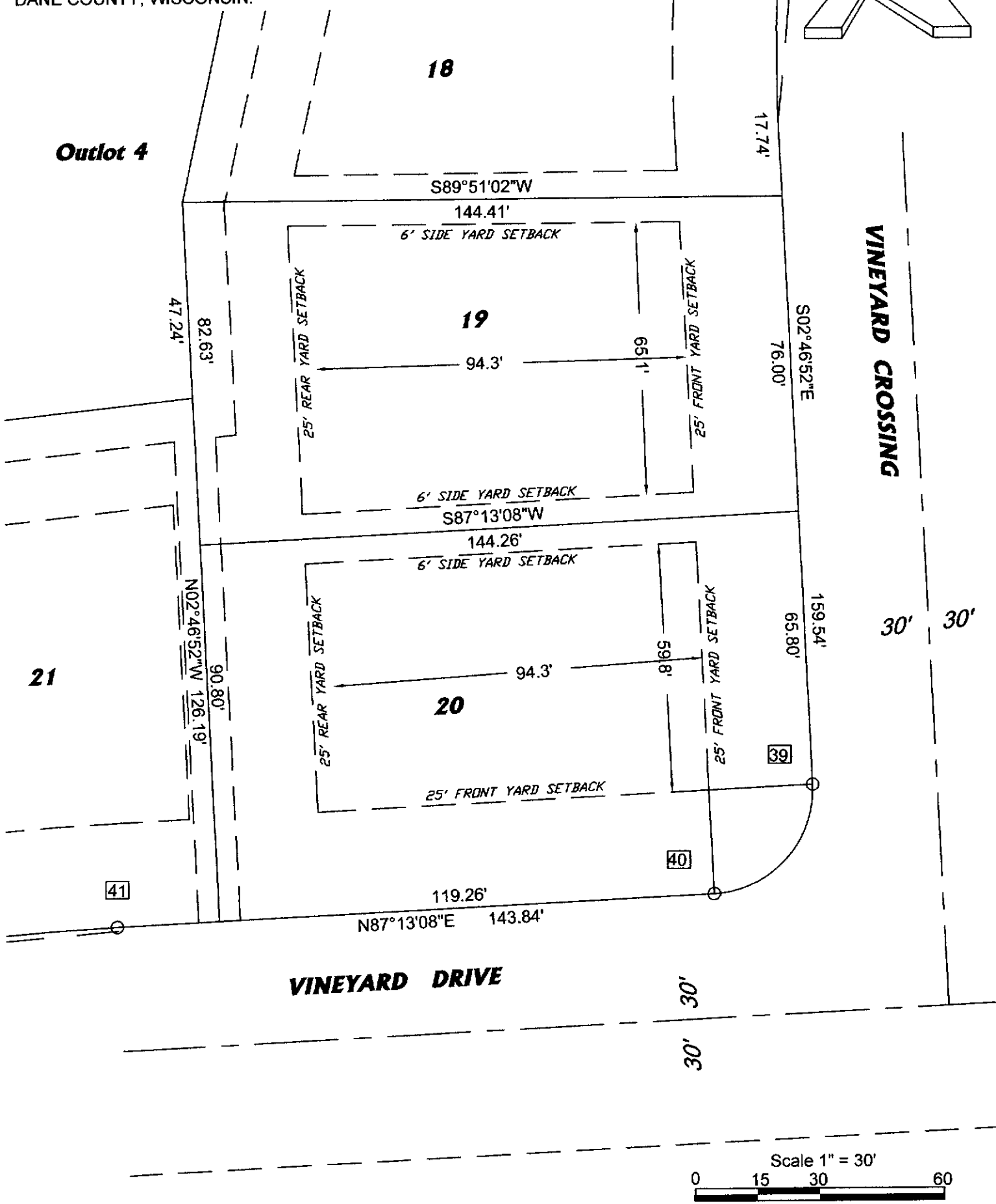
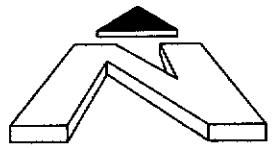
BUILDING ENVELOPE DETAIL

LOTS 16, 17, & 18, THE VINEYARDS AT CAMBRIDGE, VILLAGE OF CAMBRIDGE, DANE COUNTY, WISCONSIN.



BUILDING ENVELOPE DETAIL

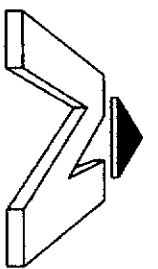
LOTS 19 & 20, THE VINEYARDS AT CAMBRIDGE, VILLAGE OF CAMBRIDGE,
DANE COUNTY, WISCONSIN.



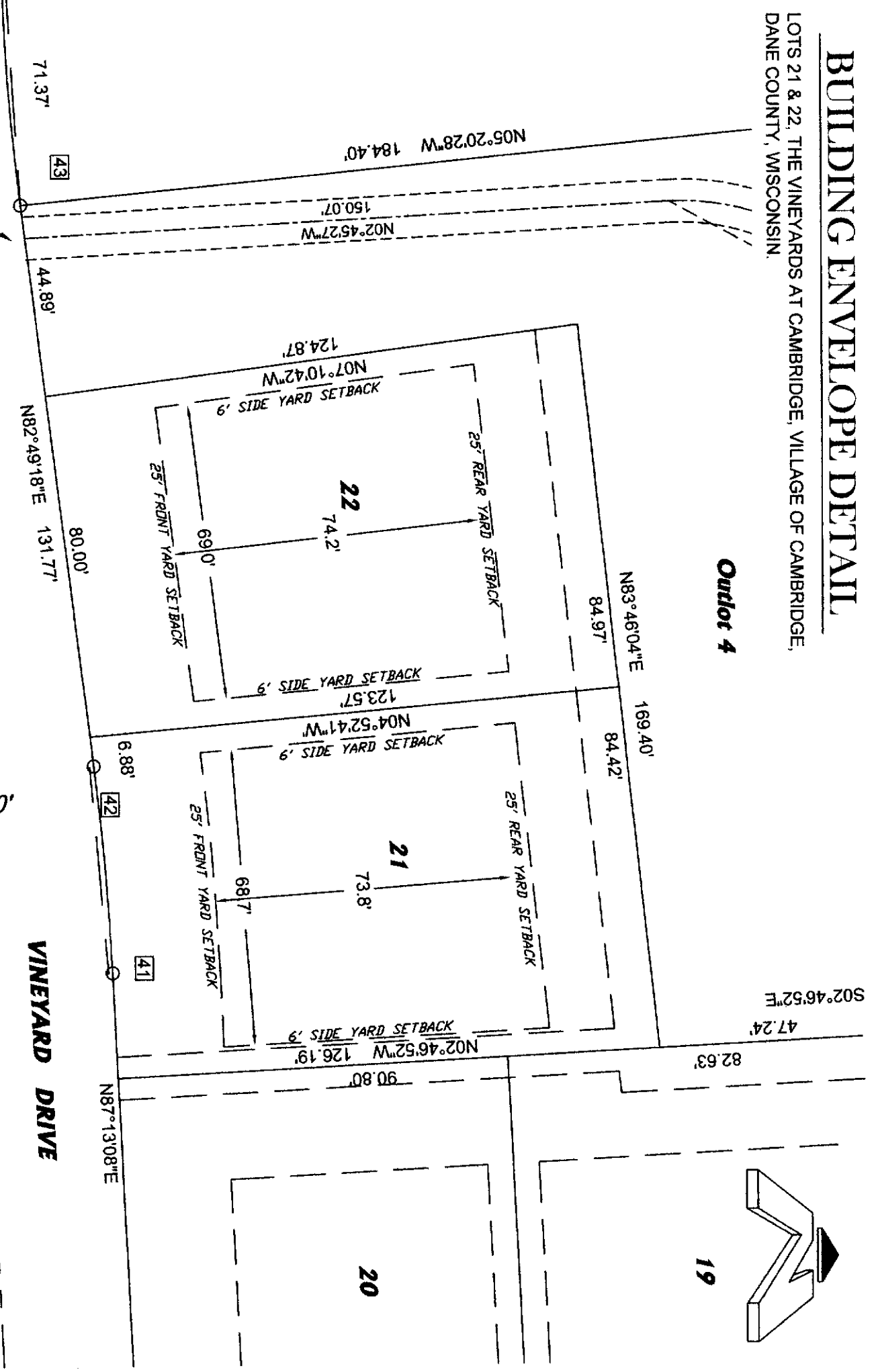
BUILDING ENVELOPE DETAIL

LOTS 21 & 22, THE VINEYARDS AT CAMBRIDGE, VILLAGE OF CAMBRIDGE, DANE COUNTY, WISCONSIN

Outlot 4

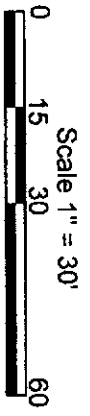


19



30' 30'

VINEYARD DRIVE



BUILDING ENVELOPE DETAIL

LOTS 23 & 24, THE VINEYARDS AT CAMBRIDGE, VILLAGE OF CAMBRIDGE,
DANE COUNTY, WISCONSIN.



KENSETH WAY

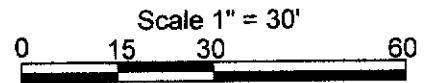
25

24

23

Outlot 4

Outlot 3



30' 30'

95.00'

95.00'

25' FRONT YARD SETBACK

79.5'

S58°27'39"E
150.01'

6' SIDE YARD SETBACK

103.9'

25' REAR YARD SETBACK

73.55'

73.55'

6' SIDE YARD SETBACK
S66°35'30"E
155.24'

6' SIDE YARD SETBACK

103.8'

25' REAR YARD SETBACK

73.55'

147.09'
N23°24'30"E

95.00'

25' FRONT YARD SETBACK

79.5'

6' SIDE YARD SETBACK
S74°43'21"E
150.01'

150.01'

48

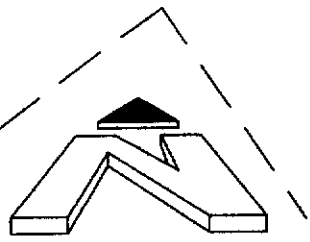
49

50

BUILDING ENVELOPE DETAIL

LOTS 25 & 26, THE VINEYARDS AT CAMBRIDGE, VILLAGE OF CAMBRIDGE,
DANE COUNTY, WISCONSIN.

53



27

**KENSETH
WAY**

52

26

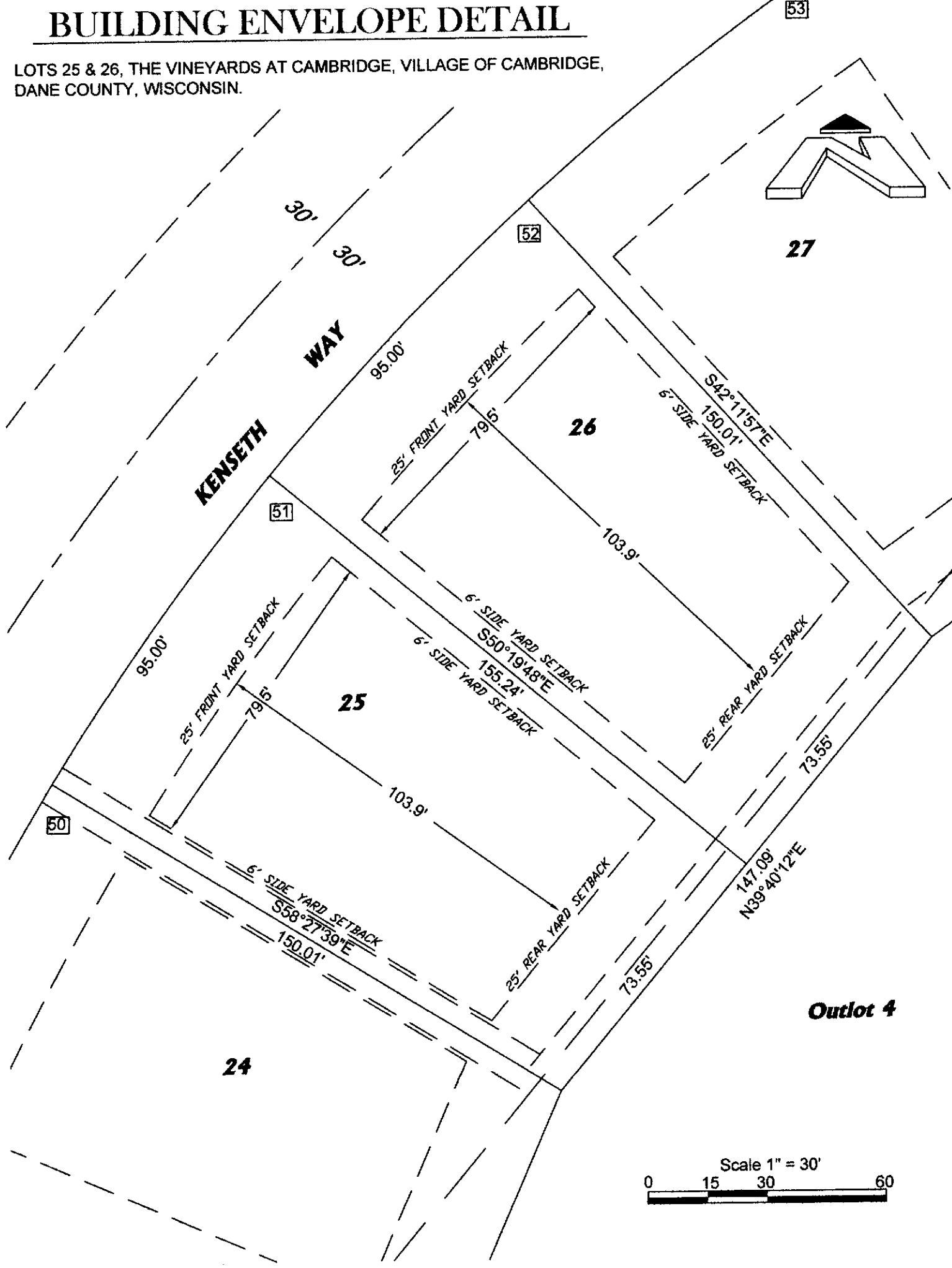
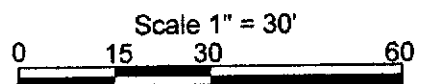
51

25

50

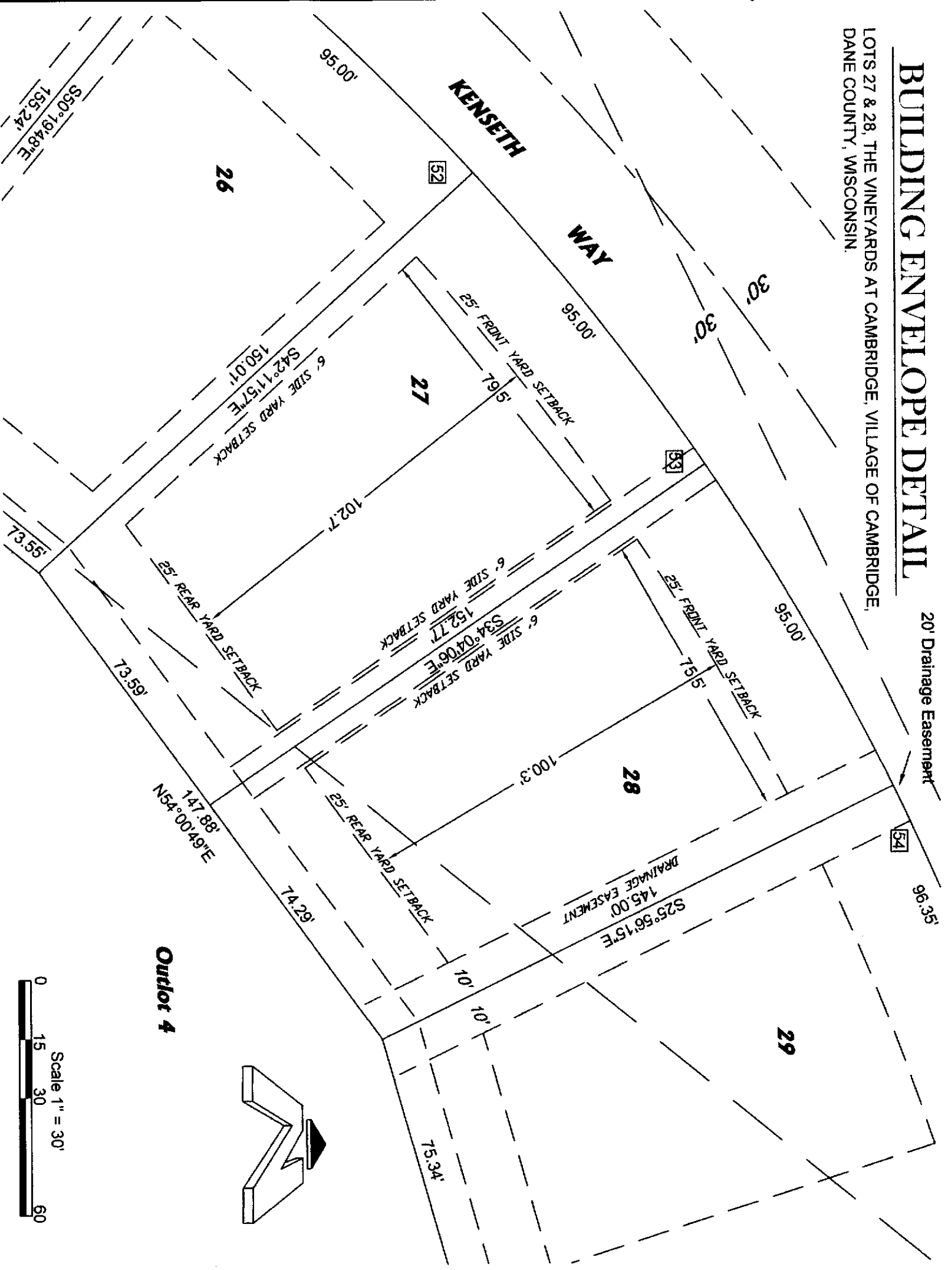
24

Outlot 4

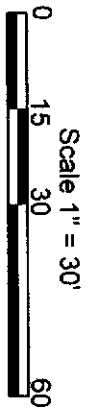


BUILDING ENVELOPE DETAIL

LOTS 27 & 28, THE VINEYARDS AT CAMBRIDGE, VILLAGE OF CAMBRIDGE,
DANE COUNTY, WISCONSIN

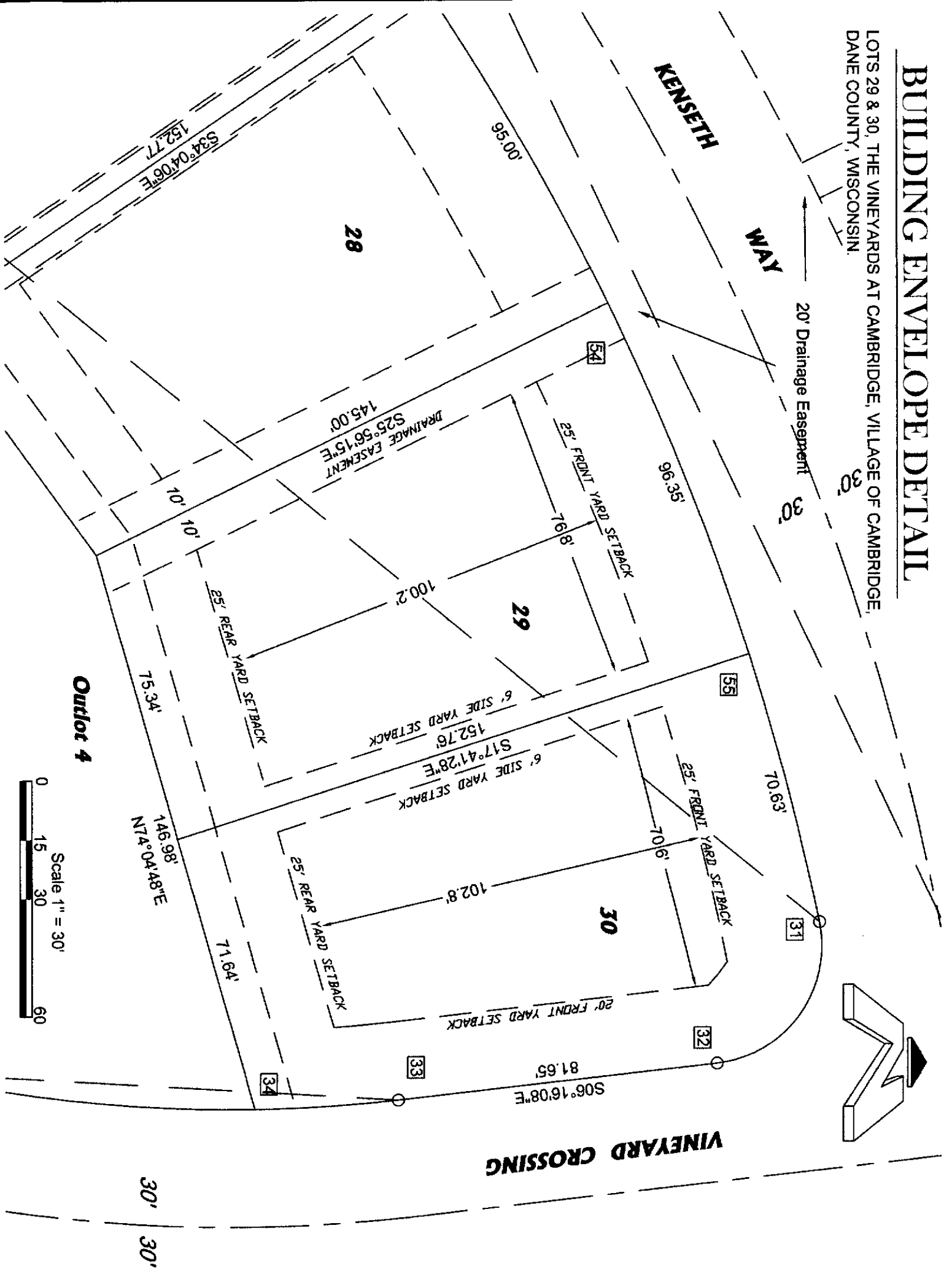
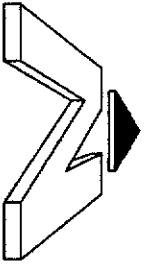


Outlot 4



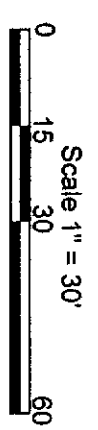
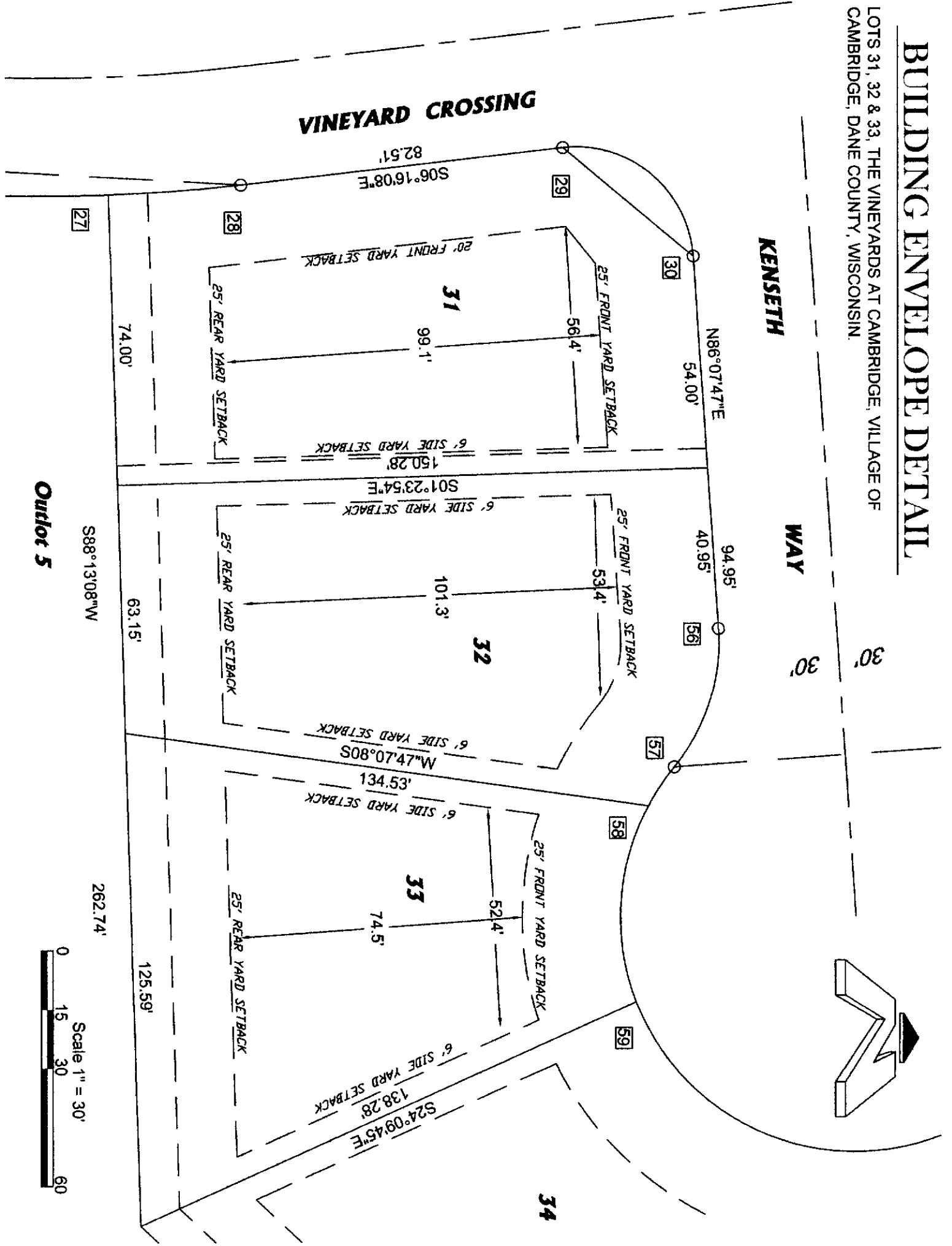
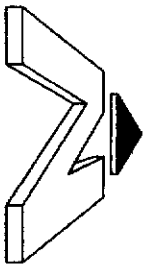
BUILDING ENVELOPE DETAIL

LOTS 29 & 30, THE VINEYARDS AT CAMBRIDGE, VILLAGE OF CAMBRIDGE,
DANE COUNTY, WISCONSIN.



BUILDING ENVELOPE DETAIL

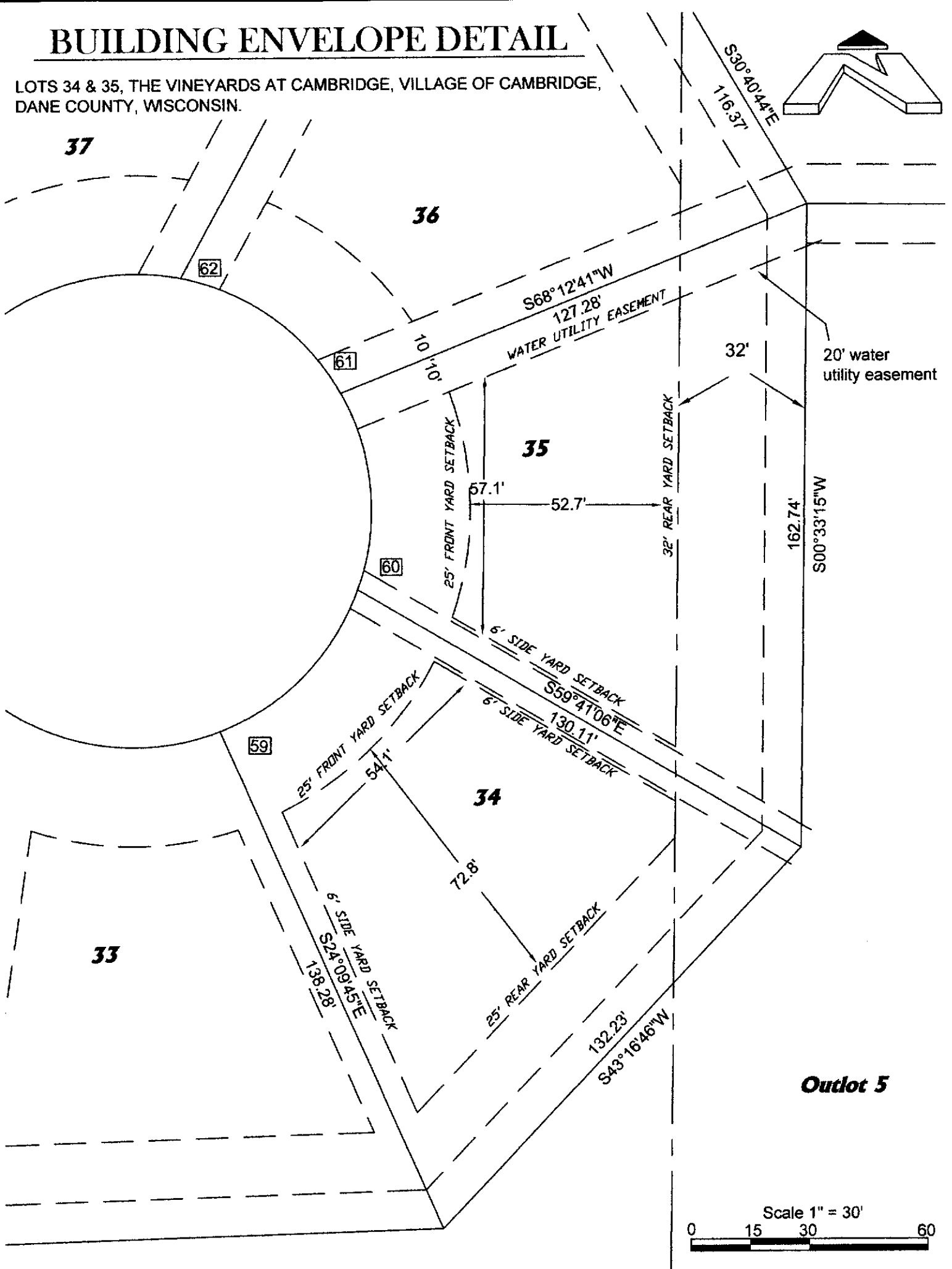
LOTS 31, 32 & 33, THE VINEYARDS AT CAMBRIDGE, VILLAGE OF CAMBRIDGE, DANE COUNTY, WISCONSIN.



Outlet 5

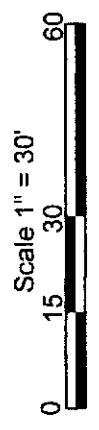
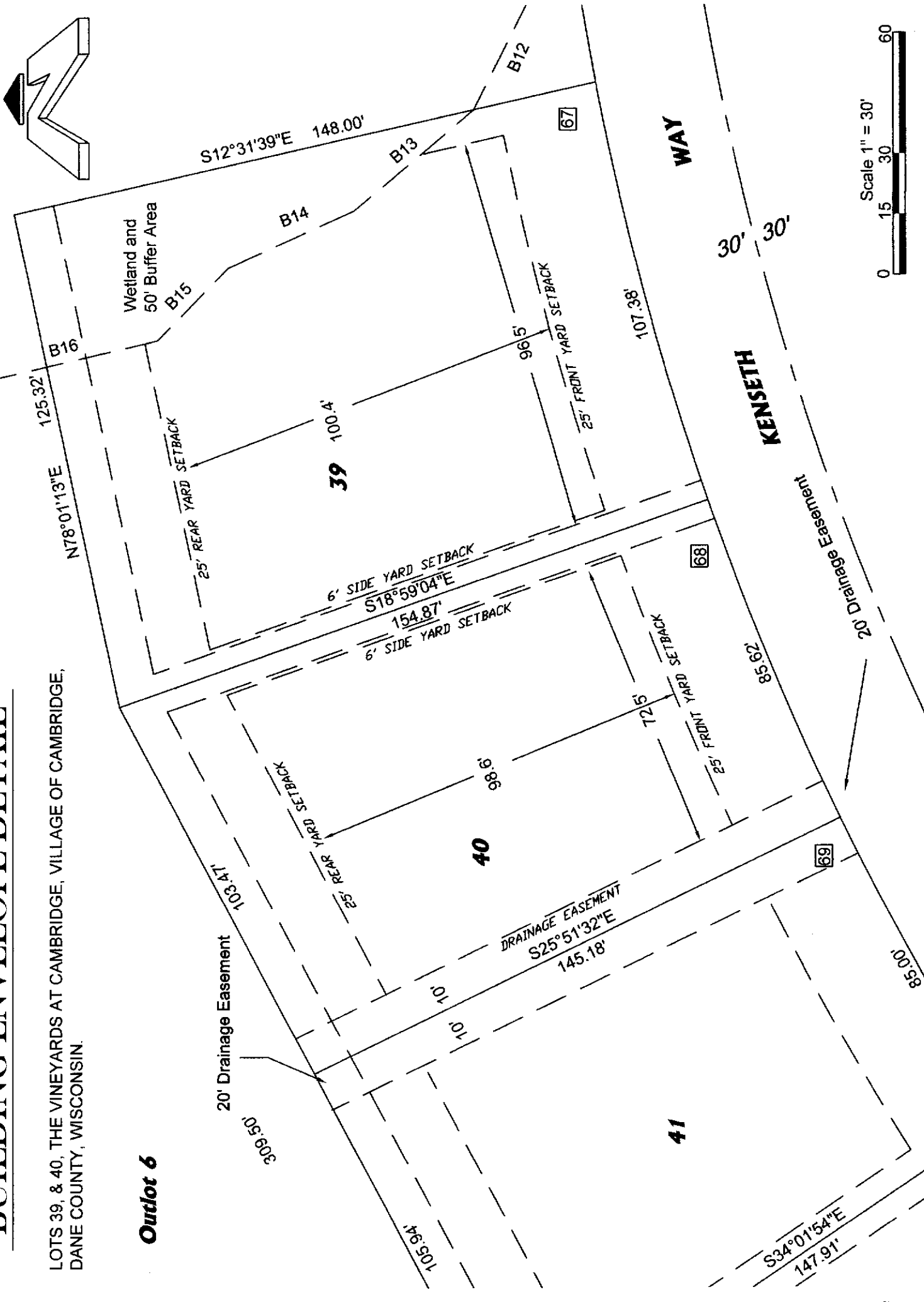
BUILDING ENVELOPE DETAIL

LOTS 34 & 35, THE VINEYARDS AT CAMBRIDGE, VILLAGE OF CAMBRIDGE,
DANE COUNTY, WISCONSIN.



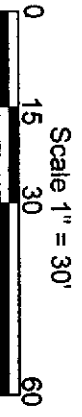
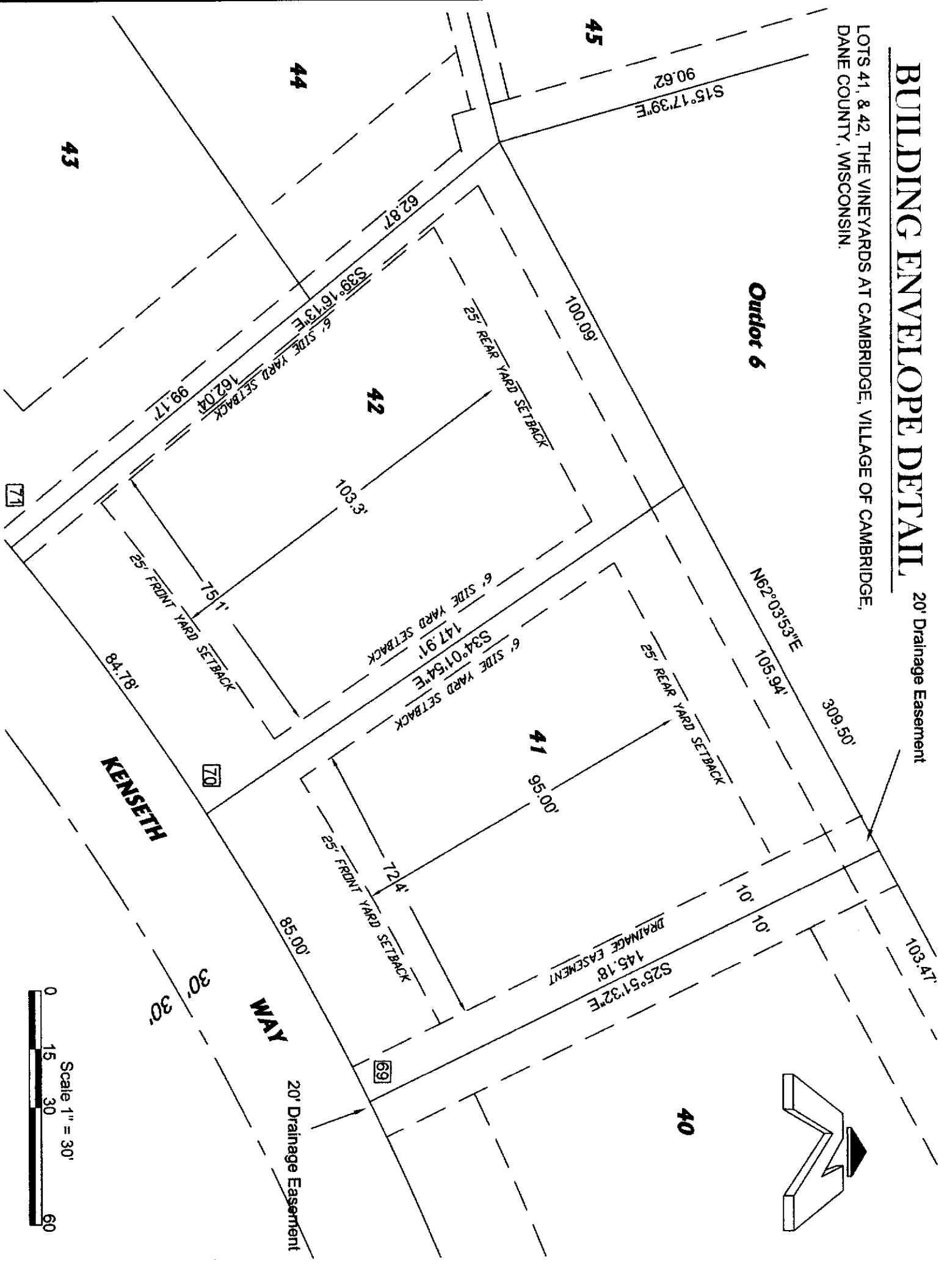
BUILDING ENVELOPE DETAIL

LOTS 39, & 40, THE VINEYARDS AT CAMBRIDGE, VILLAGE OF CAMBRIDGE,
DANE COUNTY, WISCONSIN.



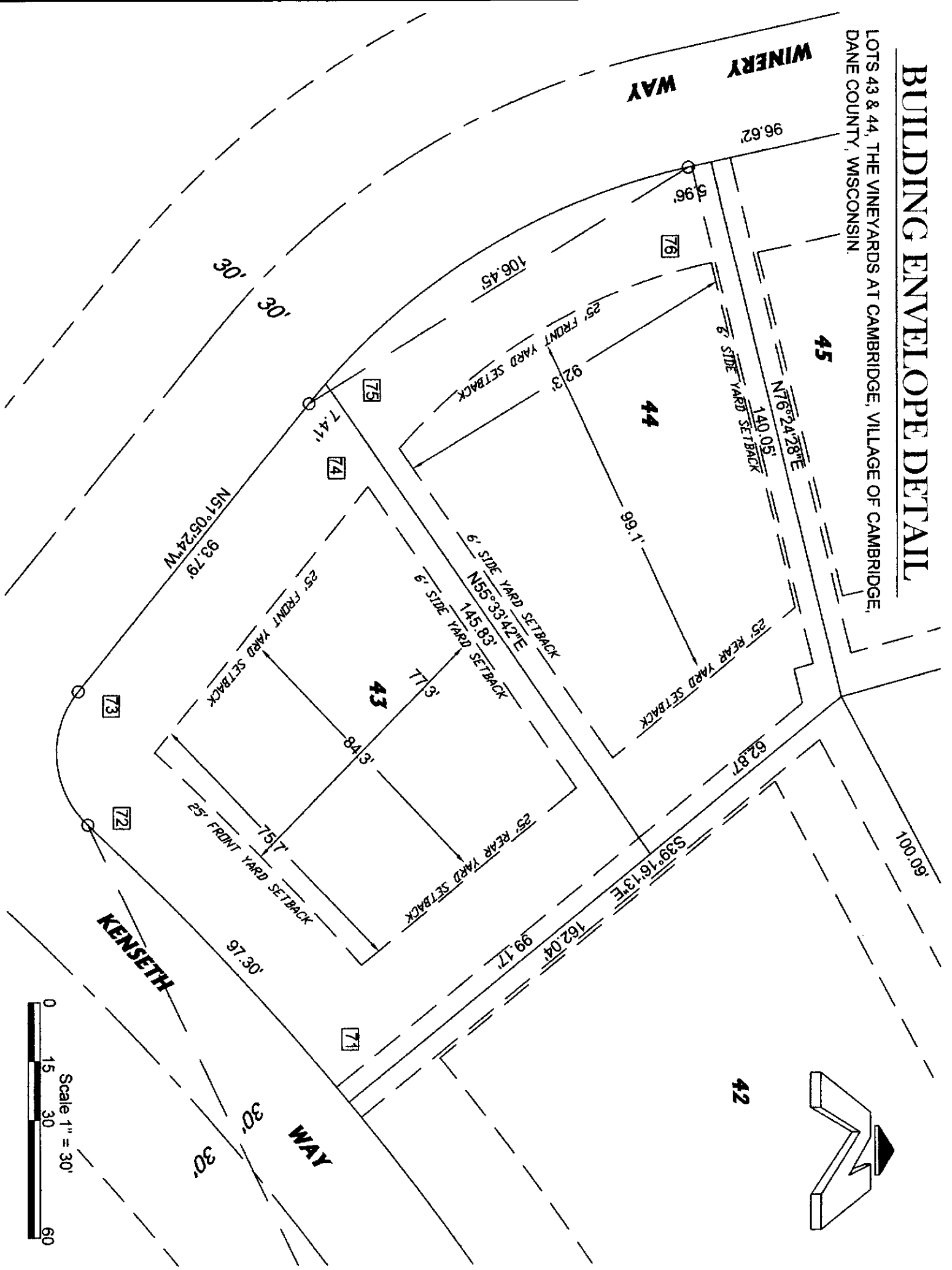
BUILDING ENVELOPE DETAIL, 20' Drainage Easement

LOTS 41, & 42, THE VINEYARDS AT CAMBRIDGE, VILLAGE OF CAMBRIDGE, DANE COUNTY, WISCONSIN.



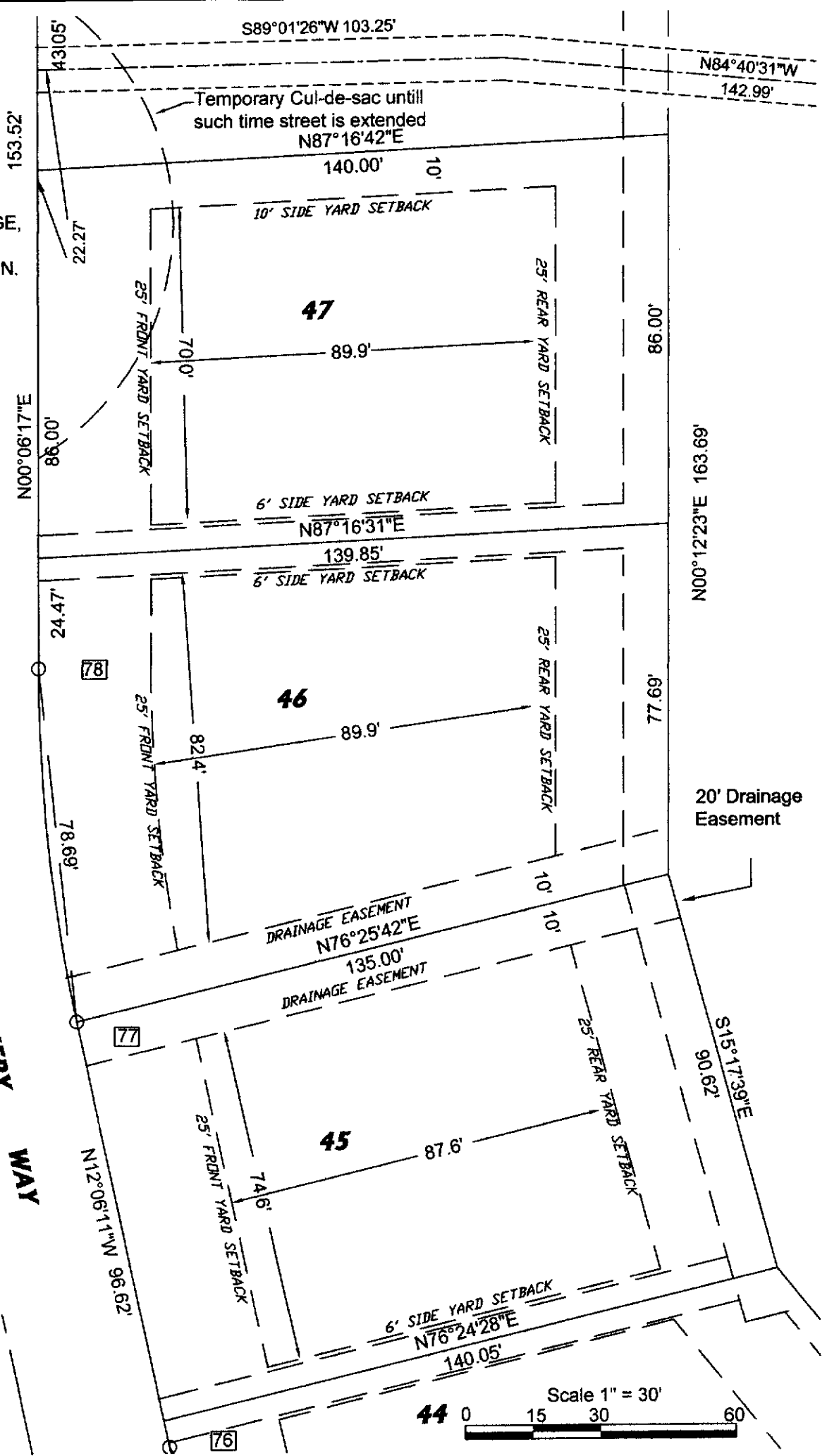
BUILDING ENVELOPE DETAIL

LOTS 43 & 44, THE VINEYARDS AT CAMBRIDGE, VILLAGE OF CAMBRIDGE,
DANE COUNTY, WISCONSIN



BUILDING ENVELOPE DETAIL

LOTS 45, 46, & 47, THE VINEYARDS AT CAMBRIDGE, VILLAGE OF CAMBRIDGE, DANE COUNTY, WISCONSIN.

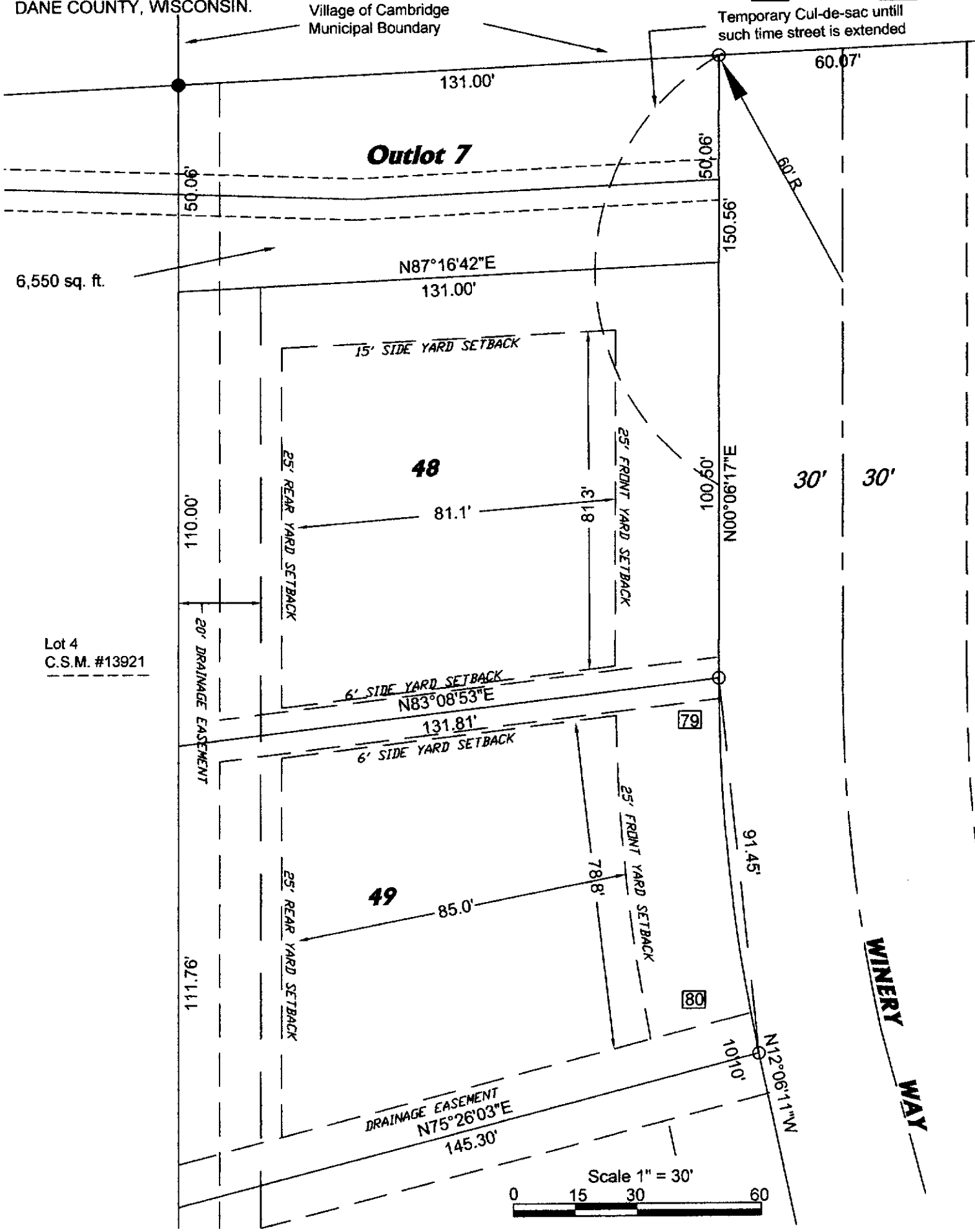


BUILDING ENVELOPE DETAIL

LOTS 48 & 49, THE VINEYARDS AT CAMBRIDGE, VILLAGE OF CAMBRIDGE,
DANE COUNTY, WISCONSIN.

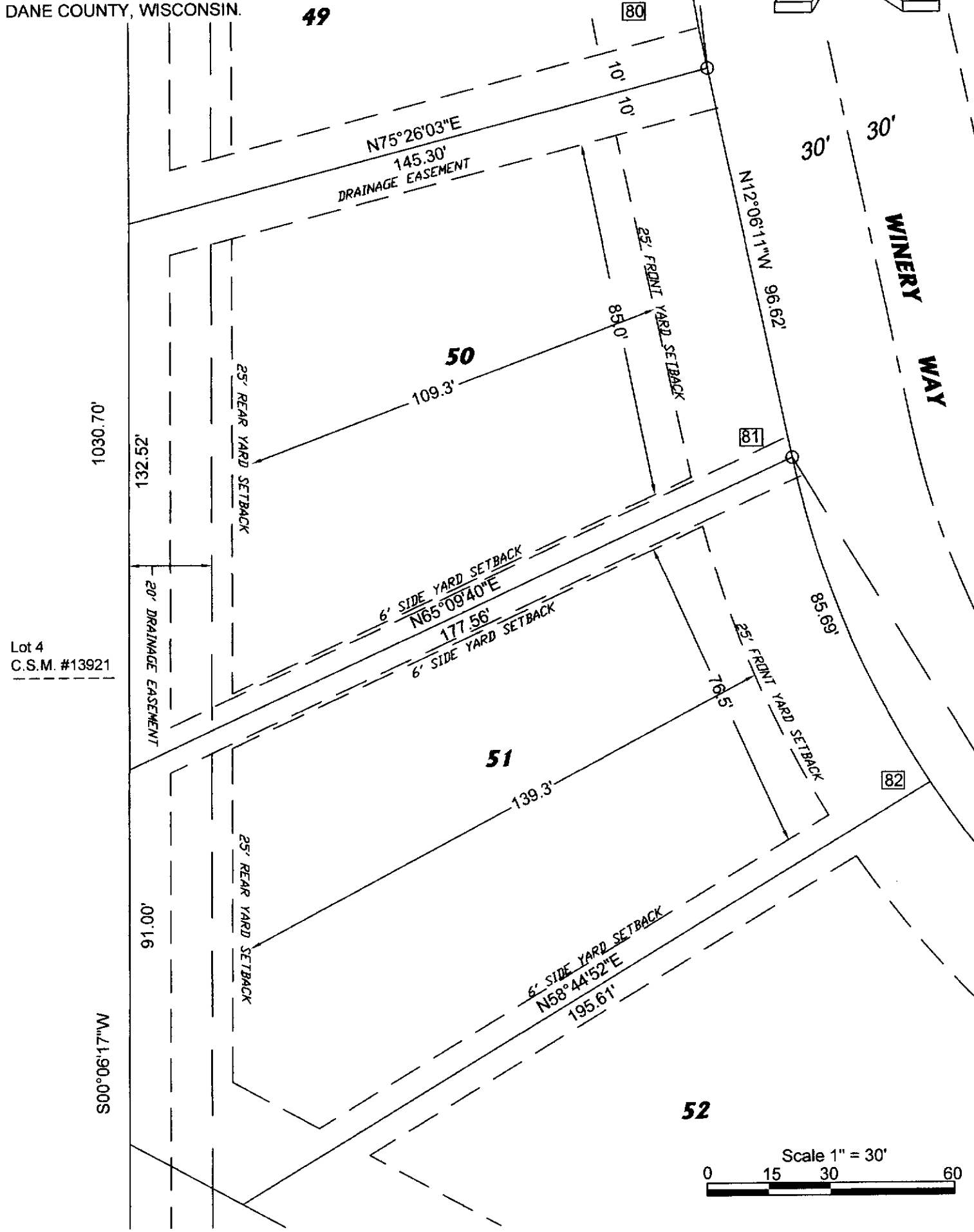
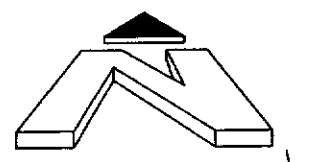


Temporary Cul-de-sac until
such time street is extended



BUILDING ENVELOPE DETAIL

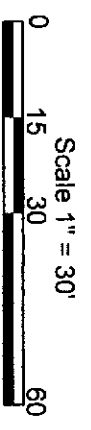
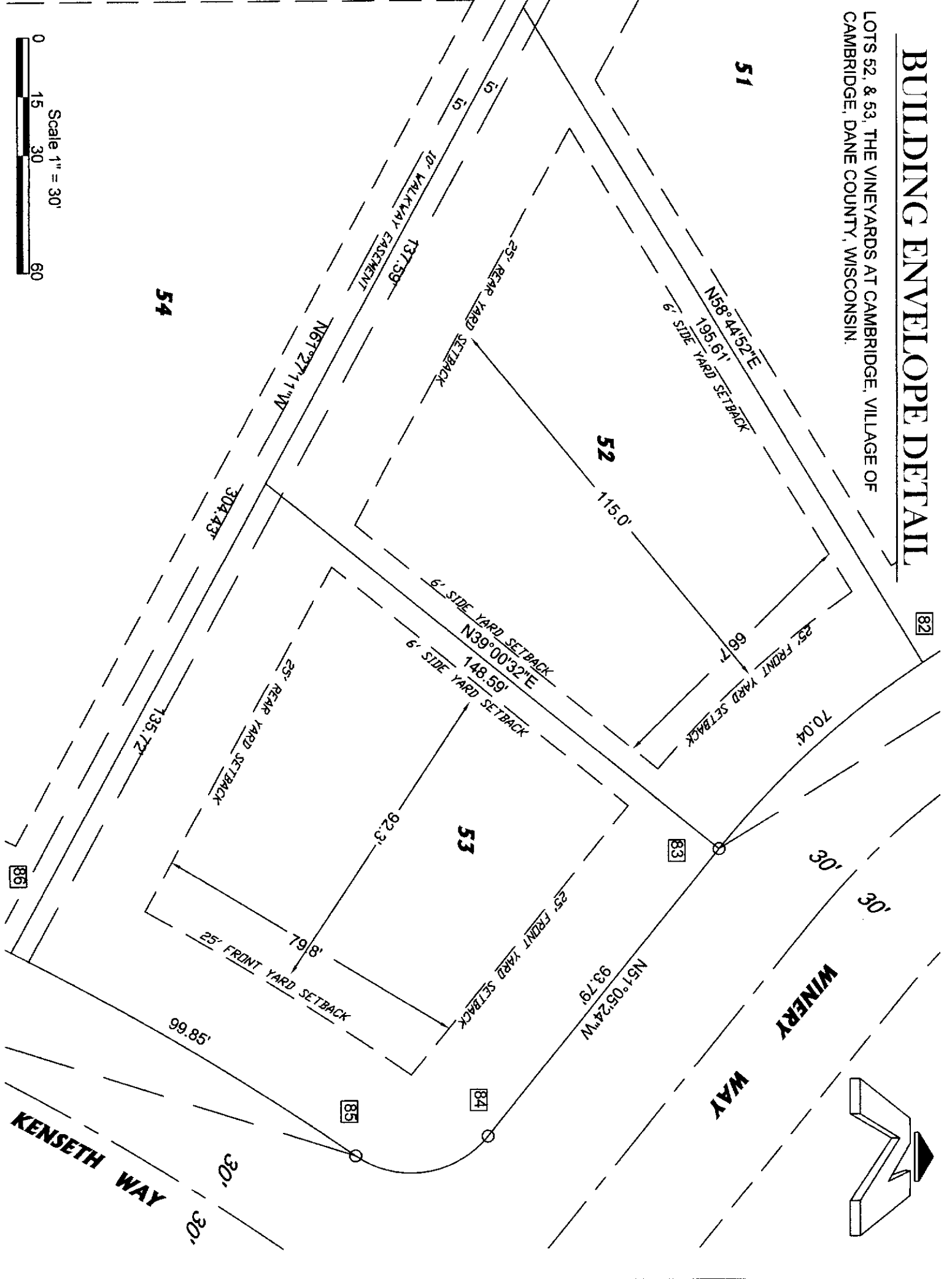
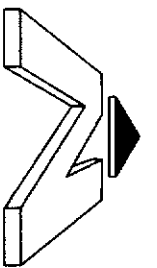
LOTS 50 & 51, THE VINEYARDS AT CAMBRIDGE, VILLAGE OF CAMBRIDGE,
DANE COUNTY, WISCONSIN.



Lot 4
C.S.M. #13921

BUILDING ENVELOPE DETAIL

LOTS 52, & 53, THE VINEYARDS AT CAMBRIDGE, VILLAGE OF CAMBRIDGE, DANE COUNTY, WISCONSIN



BUILDING ENVELOPE DETAIL

LOT 54, THE VINEYARDS AT CAMBRIDGE, VILLAGE OF CAMBRIDGE, DANE COUNTY, WISCONSIN.

